

Emergency Capping of Chlorine Tank Car
Location: South Central Georgia
Client: Major Railroad
Contract Amount: Confidential

PROBLEM

A 90-ton railcar containing liquid chlorine was leaking chlorine gas through a pressure relief valve at a railyard.

Remtech was engaged by the railroad to investigate the problem and determine if the leak could be stopped without an evacuation.

SOLUTION

Chlorine vapors were observed several hundred feet away from the railcar.

No residential receptors were located within several thousand feet of the car.

Remtech seated a Chlorep "C Kit" over the leaking valve and stopped the release.

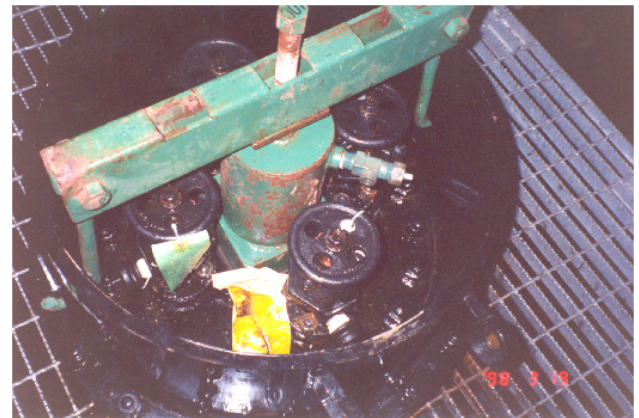
COST/BENEFITS

Nine (9) chlorine cars from a Canadian chlorine supplier had cars on the US rail system with defective pressure relief valves.

The minor chlorine release was safely stopped without an evacuation.



Assessment of Leaking Chlorine Car



C Kit Placed Over Leaking Valve