

- ❖ **Emergency Spill & Disaster Response**
- ❖ **Environmental Remediation & Abatement**
- ❖ **Industrial Services**
- ❖ **Pollution Prevention & Construction**
- ❖ **Environmental Consulting & Training**
- ❖ **Waste Management**



## WHAT WE DO

**Remtech Engineer's** environmental systems approach to emergency response, remediation, and industrial services reduces; the layering of firms, completion time, and project costs. Our extensive experience allows us to select "smart" sustainable and practical solutions that work.

Remtech's multi-disciplinary team professionals ensures that the appropriate technical approach and resources are applied to solutions that will withstand the test of time and changing regulations.

With over 4,000 projects completed over the past 28 years, Remtech has become a preferred environmental services provider for industrial and governmental clients.

Remtech's specialized services include:

- **Emergency Response & Remediation**
- **Bioremediation with HC-2000**
- **Mold, Lead, Asbestos Abatement**
- **Industrial Maintenance & Cleaning**
- **Industrial Vacuum Truck (with Hi Rail) Services**
- **Pollution Prevention Design & Construction**
- **Environmental Engineering Consulting & Training**
- **Disaster Response & Recovery**
- **Demolition & Restoration**
- **Waste Management**

Remtech is run by Board Certified Environmental Engineers (American Academy of Environmental Engineers & Scientists) and Certified Hazardous Materials Managers. This ensures peer-reviewed qualifications, experience, and proven cost-effective/state-of-the-art solutions to complex environmental problems.

Remtech's fleet of vehicles, trailers, and equipment minimizes response, remediation times, and costs. Remtech's resources include: product transfer; confined space entry & breathing systems; 4,000 ft containment boom/boats/skimers; mobile and custom treatment systems; excavation equipment; high-rail vacuum trucks; mobile power plants; compressors; railcar repair and capping kits (Midland, Chlorex, Transfer kits); tankers; frac tanks; vacuum boxes; spill containment bladders; and other support equipment.

Remtech has developed a proprietary bioremediation accelerator and cleaner, **HC-2000 (HC2)**, that has been used successfully on over 400 sites during the past 17 years. HC2 enhances the natural degradation processes and cleans refined solvents and petroleum based compounds in soil, groundwater, surface water, railroad ballast, and other media.

Remtech would welcome the opportunity to earn the right to become a preferred vendor for your environmental and industrial service projects. Remtech is committed to completing each project in a professional, discrete, and cost-effective manner.



Acetic Acid Fire Response



Gasoline Remediation In Fractured Rock  
Restores \$16M Bldg. Permit



High Rail & Industrial Cleaning Services



Power Plant Environmental Training



Ethanol Unloading Rack with Secondary  
Containment

## WHO WE ARE

Remtech was founded by **Mark D. Ryckman** in 1988. Mr. Ryckman possesses a BS in Civil Engineering and MS in Environmental Systems Engineering from Clemson University and a BA in Mathematics from DePauw University. He is a Registered Professional Engineer in seven (7) states and a Board Certified Environmental Engineer in Water & Wastewater and Hazardous Waste Management conferred by the American Academy of Environmental Engineers & Scientists.

He served as Executive Vice President (for 11 years) for D. W. Ryckman & Associates/REACT with his father Dr. D. W. Ryckman (MIT graduate). Dr. "Rick" Ryckman founded one of the first Graduate Environmental Engineering programs at Washington University in St. Louis, Missouri known as ENVIRSAN and an environmental consulting firm RETA (Ryckman, Edgerley, Tomlinson & Associates).

**Larry K. Seabolt, Jr.**, has served as Vice President of Remtech for over 20 years and possesses an engineering degree from Southern Tech in Civil & Environmental Engineering. He is a Certified Hazardous Materials Manager, and has chaired the Operations Committee of the GA DOT TIME (Traffic Incident Management Enhancement) and Cobb County Resource Council.



Mark D. Ryckman  
Founder & CEO



Larry K. Seabolt, Jr.  
Vice President

## SERVICE AREA



Remtech has completed over 4,000 projects in 23 States. Our corporate offices are located in Atlanta (Marietta), Georgia and primary service area includes: Georgia, Alabama, South Carolina, North Carolina, Tennessee, and Florida. Remtech projects have also been completed in Arkansas, California, Kansas, Illinois, Indiana, Iowa, Louisiana, Maryland, Michigan, Minnesota, Mississippi, Missouri, New Mexico, New York, Ohio, Virginia, and West Virginia.

## CERTIFICATES & LICENSES

- Registered Professional Engineer in Seven States
- Board Certified Hazardous Waste Management Engineer
- Board Certified Water & Wastewater Engineer
- Level II Certified Erosion Control Engineer
- Certified Hazardous Materials Manager
- Storage Tank Contractor, Florida
- USCG OSRO Contractor
- Certified Lead Renovation Contractor
- North Carolina Remediation Contractor
- Certified CHEMNET CHEMTREC Contractor
- Licensed Water/Environmental Driller, SC, GA
- E-Rail Safe Certified
- Hazwoper Hazardous Waste
- Hazwoper Emergency Response
- Hazmat First Responder & Technician
- Incident Commander



## SELECT CLIENTS

Anheuser-Busch  
Alchem  
American Coach  
Amrep Speciality Chemicals  
ASK Chemicals  
Bayer Chemical  
Capital Materials  
Caterpillar  
CITGO Petroleum  
Coca-Cola  
Cobb Marietta Water Authority  
Colonial Pipeline  
CSX  
Dobbins Air Force Reserve  
Dow Chemical  
Emory  
FEDX

FEDX Ground  
Georgia Building Authority  
Georgia Power  
Georgia Tech  
Georgia Transmission  
Haz-Mat One Response  
J. M. Huber  
Kemira Chemical  
Kenan Advantage  
Kimberly Clarke  
Kroger Southern Ice Cream  
Lockheed  
Lynx Chemical  
Magellan  
Mannington Commercial  
Metal Container Corporation  
Norfolk Southern

Oglethorpe Power  
Patterson Pump  
Pikes Energy  
Safety-Kleen  
Southern Company  
Tindall Corporation  
Warner Brothers  
Whitaker Chemical  
UPS  
UPS Ground  
URS  
Yellow Roadway Corporation  
Warner Brothers  
Waste Management  
XL Global  
Zep

## EMERGENCY RESPONSE

Remtech provides a 24-hour spill response network staffed by Hazwoper trained personnel. Remtech's principals have responded to over 6,000 incidents since 1975 including: hazardous material, hazardous waste, reactives, oils, chemicals, heavy metals & mercury, infectious/biohazard/biological agent releases for the chemical, manufacturing, institutional, hospital, energy (power generation and transmission), and transportation industries since 1975. Remtech is a Coast Guard OSRO and CHEMNET Contractor and maintains an excellent safety record over the past 28 years.

Our Corporate Response Center is located in Atlanta, Georgia and hosts one of the largest fleets of emergency response, remediation, disaster response, industrial services, equipment, and resources in the Southeast. Remtech minimizes risks and costs by rapidly converting uncontrolled situations into manageable projects. Accident root cause determinations provides opportunities for cost-recovery, liability transfer to responsible parties, and loss prevention information to minimize incident reoccurrence and enhanced prevention planning.

Remtech specializes in spill response in the inland waterway system (fast currents) that requires unique response capabilities and resources different from saltwater coastal contractors. Remtech has over 4,000 feet of inland river containment boom, 60,000 gallons of containment storage, mobile treatment systems, transfer pumps, leak repair kits for railcars, tankers, vacuum trucks, tanks, frac tanks, and other resources.

## Response Capabilities

- Oil Spill & Hazardous Material Response
- Chemical Transfer & High Pressure Gas Transfers
- Biohazard & Infectious Waste Cleanups
- Intermodal Container Releases
- Reactive & Explosive Material Mitigation
- Chemical Fire & Plant Explosion Mitigation
- Train Derailments, Tractor-Trailer & Tanker Accidents
- Power Plant & Transformer Fire & Explosion Response
- Leaking Tank & Container Cleanup
- Inland Waterway & Marina Spill Cleanups
- Natural Disaster Response & Restoration



Glacial Acetic Acid Explosion Response



Leaking 90-ton Chlorine Car Capped



Runaway Chemical Reaction Stopped



Chemical Tanker Rollover Transfer

## ENVIRONMENTAL REMEDIATION

Remtech's principals have completed over 6,000 environmental remediations since 1975. Remtech specializes in biological, physicochemical, and mechanical cleanup technologies including: enhanced biostimulation, thermal, and chemical treatment of soil, groundwater, contaminated facilities, and hazardous waste cleanups.

Remtech can handle your project from cradle to grave. By integrating site remediation, engineering design, and contracting, the layering of firms and project life cycle costs are substantially reduced. Remediation & Abatement Services

- Soil & Groundwater Remediation
- HC-2000 Bioremediation & Cleaning
- Superfund Site Cleanups
- Hazardous Waste & HSRA Cleanups
- Brownfields Restorations
- UST & AST Tank Cleanups & Closures
- Infectious, Toxic & Biohazard Waste Cleanups
- Landfill and Pond Closures & Capping
- Lead, Asbestos, Mercury, PCB, Dioxin Abatements
- Mold Abatement & Remediation
- Fire & Water Damage Restoration
- Multi-Phase Vacuum Extraction
- Facility Decontaminations

## Railyard Cleanups

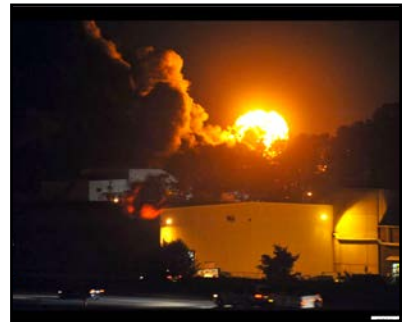
- High-Rail Vacuum Truck Services
- Oil/Water Separator, Tank, Trench, Trap & Sewer Cleaning
- Switch Cleaning
- Removal & Replacement of Trackmats
- Ballast & Pavement Cleaning
- Coal, Powder, Granular Material Removal
- AST/UST/Pipeline Cleaning
- Railroad Ballast Remediation with HC-2000

## DEMOLITION/DISMANTLEMENT SERVICES

- Hazardous Material Removal prior to Demolition
- ROW Clearing, Demolition, and Utility Closure
- Comprehensive or Selective Demolition
- Asset & Metals Recovery
- Fire Burn Residue Demolition & Removal
- AST/UST/Pipeline Removals



Leaking Sulfuric Acid Tank Transfer



Major Chemical Plant  
Fire Response & Cleanup



Remtech Groundwater Treatment  
System at Superfund Site



Contaminated Foundry Site  
Remediated During Construction



Pipeline Fuel Leak Remediation



Remtech Mobile Vacuum Extraction  
System at Diesel LUST Site



\$16M Building Remediated During  
Construction



## HC-2000 REMEDIATION & CLEANING

HC-2000 (**HC2**) is a *Green Sustainable Technology*. HC2 restores the environment by accelerating native heterotrophic bacteria to degrade and clean petroleum and solvent based contaminants.

HC-2000 is a Remtech proprietary bioremediation accelerator/biosurfactant that cleans, desorbs, reduces odors, and degrades fuels, oils, lubricants, and chlorinated and non-chlorinated solvents. It works on soil, ballast, gravel, groundwater, surface water, surfaces and other matrices.

It is particularly effective treating soils and gravel at power plants, substations and ASTs without disturbing grounding grids.

HC2 removes contaminants with minimal economic disruptions to business and generally cost less than other remedial technologies. HC-2000 has been used successfully on over 400 sites during the past 17 years. HC2 is approved by Georgia & Florida for soil and groundwater cleanups. Other states and regulatory authorities typically rapidly approve HC-2000 on a case-by-case basis.

HC-2000 fuel and solvent biodegradation efficacy (degradation efficiency) and lower toxicity surpasses commercial fertilizers, Microblaze, Fuel Buster (F-500), BioSolve, and the majority of products on EPA's National Contingency Plan List.

HC2 is designed to work on inland freshwater applications and refined fuels and solvents that are not addressed by EPA's NPL list of saltwater approved crude oil remediation and cleaning products.

## HC-2000 Applications

- Soil Remediations
- Groundwater Remediations
- Surfacewater Remediations
- Gravel Remediations at Power Plants, Substations and AST Tank Farms w/o Disturbing Grounding Grids
- Wastewater Treatment Enhancement
- Oil Sheen & Odor Control
- Railroad Ballast Remediations
- Pavement & Surface Cleaning
- Solids & Sludge Breakup
- Forrest Canopy & Vegetation Cleaning



Remtech Total Fluids Extraction  
Groundwater Treatment System



HC2 Gasoline Wetland BioFence  
Remediation System



Remtech HC2 Mobile Treatment  
Trailer at New York Solvent Site



HC2 JP8 Stream Bank Remediation



HC2 Diesel Spill Remediation around  
100 yr old Fragile Water Main



International Airport JP4 HC2 Remediation  
in Restricted Area



HC2 Fuel Remediation  
on 1800 ft of Rail w/o Track Time

## INDUSTRIAL SERVICES

Remtech offers a complete array of industrial facility, tank, process, and pipeline cleaning, inspection, repair, and construction services.

Remtech's experienced professionals offer fast-track root cause identification and remedial solutions that limit operational interruptions due to system failure, clogging, capacity limitations, and product change outs.

### Cleaning, Inspection, Repair & Construction

- Sewers, Catch Basins, Manholes
- Process Lines & Pipelines
- Tanks, Tankers, Railcars
- Buildings, Ducts, Bag-houses & Silos
- Lift Stations & Oil/Water Separators
- Stormwater Retention Facilities, Ponds, Pits & Lagoons
- Process Unit Operations, Pumps & Controls
- Wastewater Treatment Systems
- Railyard Track Cleaning and Track Mat Installation

## CONFINED SPACE SERVICES

Remtech's OSHA trained confined space entry specialists have completed hundreds of projects using best management safety practices. State-of-the-art safety, monitoring, ventilation, PPE, and engineering controls ensures that potential hazards are minimized during cleaning, inspections, repairs, upgrades, and new construction projects.

### Confined Space Cleaning, Inspection & Repairs

- Scheduled Maintenance Inspections
- Product Removal/Changeout from Tanks, Silos, Vaults, Pipes
- Removal of Spills from Vaults, Sewers, Catch Basins, Pits
- Cleaning for Regulatory Compliance and New System Installations
- Repairs of Internal Mechanical and Electrical Systems
- Post-incident Inspections and Repairs
- Decommissioning of Equipment

### Remote Cleaning

Remtech employs remote confined space cleaning techniques whenever possible to minimize hazard exposures using:

- High Vacuum Removal of Solids, Slurries, and Liquids
- High Pressure Water/Steam Blasting and Jetting
- Remote Explosion Proof Pumping
- Abrasive and Chemical Cleaning
- Railyard Track Pan & Switch Cleaning
- Railyard Ballast & Pavement Cleaning



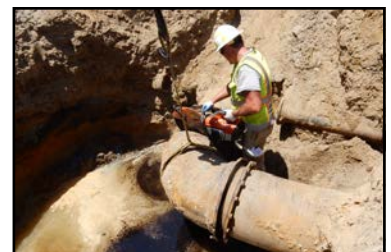
Chemical Tank Cleaning & Repair



Steam Cleaning 250 MW Transformer  
after Fire



Leaking Fuel Cleanup & Line Repair



Wastewater Sewer Cleaning  
and Manhole/Pipe Installation



Mixer Blade Repair in Reactor



## VACUUM TRUCK SERVICES

Remtech offers vacuum truck services (with Hi Rail capabilities) for environmental cleanups; emergency response to spills and derailments; and for geotechnical applications including potholing/daylighting, and non-destructive location and uncovering of utilities, pipelines and underground structures.

Remtech has developed a new sewer cleaning vacuum/jetting system called *VacuJet* that removes heavy solids from long sections of sewers not achievable by conventional jetting.

- Confined Space Cleaning
- Tank, Tanker, Railcar Cleaning & Transfers
- Railroad Ballast, Track & Switch Cleaning
- Granular & Powdered Material Cleanups & Transfers
- Building & Storage Facility Cleaning (Silos, Elevators, Bag-houses)
- Pipeline & Pipeline Interface Cleaning
- Process Line Cleaning
- Sewer Cleaning (Storm, Sanitary, Catch Basin, Manholes)
- *VacuJet*<sup>TM</sup> Heavy Solids Removal by Jetting & Vacuum Extraction
- Sludge & Slurry Cleanups
- Landfill Leachate Recovery
- Pit, Lagoon, Clarifier, Sump, Digester Clean-outs
- Oil/Water Separator Clean-outs
- Decontamination of Bird Droppings from Structures
- Total Fluids Extraction
- Potholing/Daylighting of Underground Utilities & Structures



AST Heat Exchanger Cleaning



Bag-house Cleaning with Vac Box



Vacuum Fuel Extraction from Leaking Line in Railyard



Total Fluids Fuel Extraction at Railyard Pipeline Break



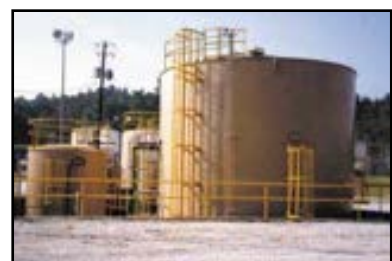
Hi-Rail Cleaning Sand Pit Sumps



*VacuJET*<sup>TM</sup> Removes Heavy Sludge From 300 ft 24" Sewer Sections

## POLLUTION PREVENTION & CONSTRUCTION

Remtech's experience gained from responding to over 4,000 incidents and determining root cause failures has made us exceptional loss prevention and system reliability design/construction professionals. Vulnerable operational and system failure elements are identified and failsafe solutions are incorporated into the operation, design, and construction of pollution prevention systems. This maximizes system reliability and reduces life cycle accident and maintenance costs.



Landfill Leachate Treatment Plant Design at Superfund Site



## Pollution Prevention System Construction

- Secondary Containment for ASTs and Pipelines
- Leak Detection and Control Systems
- Stormwater & Spill Prevention Systems
- Soil & Groundwater Treatment Systems
- Process Spill & Loss Prevention Systems
- Water & Wastewater Treatment Systems
- Railcar/Tanker Loading & Unloading Systems
- Storm, Process, & Wastewater Sewer Installation
- Oil/Water Separators

## ENVIRONMENTAL ENGINEERING CONSULTING

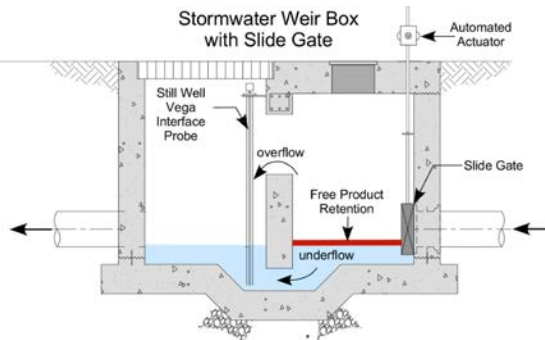
Remtech specializes in; environment property assessments, asbestos & mold investigations, mercury and heavy metals assessments, indoor pollution investigations, stormwater investigations and monitoring, prevention & response plans, root cause investigations, and regulatory compliance audits.

## Environmental Assessments

- ASTM Phase I, II, & III Assessments
- Industrial Hygiene & Indoor Pollution Assessments
- Asbestos, Mold, Lead & Heavy Metals Assessments
- Risk Based Site Closures
- Hydrology & Stormwater Investigations & Monitoring
- CCTV Sewer Video Inspections
- Underground Utility and Underground Structure Location - Ground Penetrating Radar, Liquid Smoke Testing, Conductive Tracing
- Root Cause Accident & System Failure Investigations
- Regulatory Compliance Audits



Construction of Fuel Pipe Bridge  
with Secondary Containment



Loading Rack with Secondary  
Containment & Gantry Access



Split Casing Containment with Leak  
Detection on Fuel Line Over Stream



Ethanol Unloading Rack with  
Secondary Containment



Stormwater Oil Containment Weir Box  
with Automated Sluice Gate &  
Hydrocarbon Sensor

## Prevention & Response Plans

- Spill & Stormwater Pollution Prevention Plans
- Spill Deployment Plans with Digital GPS Mapping
- Facility Response Plans
- Erosion Control Plans

## Expert Witness

- Root Cause & Forensic Investigations
- Accident Reconstruction
- Expert Testimony



100-Acre Chemical Plant  
Assessment & Remediation

## HEALTH & SAFETY TRAINING

Remtech offers health & safety training that meets OSHA, EPA, DOT, RCRA, and other regulatory requirements. Hands-on general or site/facility specific training programs are available to meet the needs of each client. Classes may be conducted at Remtech or your facility.

Remtech offers a comprehensive list of health & safety training courses. For more information to schedule classes e-mail us at [training@remtech-eng.com](mailto:training@remtech-eng.com).

### EPA Courses

- RCRA Initial and Advanced Training

### DOT Courses

- Hazmat Transportation Safety
- Transportation Safety Refresher
- Advanced HazMat Transportation Safety

### OSHA Courses

- Hazardous Waste & Emergency Response
- First Responder Operations & Technician
- Incident Command
- 8-hour Refreshers
- Process Safety Management Training

### OTHER Courses

- Stormwater Pollution Prevention Training
- Spill Response Equipment Deployment Training



Investigation Clears LTL Carrier of  
\$300K Chemical Rail Fire



UST Collapse Failure Investigation  
Results in \$275K Settlement



Gaging Free Product in  
Two Phase Extraction Well



Digital GPS Spill Deployment Plan for  
27,000-acre Power Plant Watershed



Midland Kit Training



Anhydrous NH<sub>3</sub> Training at Coal Fired  
Power Plant for NOX Removal

## WASTE DISPOSAL, RECYCLING & MINIMIZATION

Let Remtech manage your waste streams from cradle-to-grave. Each waste stream is classified and screened for waste minimization, recycling, treatment or disposal to minimize your liabilities and costs. Waste is transported and disposed of at approved facilities.

**Waste Reduction/Minimization** - Remtech segregates and reduces waste volumes (hazardous & non-hazardous wastes, solid and liquid phase separation) to provide the most economical means of disposal.

**Recycle/Reuse** - Fuels, oils, solvents, metals, batteries, plastics, and paper are recovered for reuse or recycled to reduce disposal costs and prevent unnecessary disposal.

**Special Wastes** - Bulk solids or liquids may be solidified at permitted Subtitle D Landfills or chemically fixed at pre-treatment facilities.

**Universal Wastes** - Commercial light recycling.

**Hazardous Waste** - RCRA hazardous wastes, toxic wastes, and hazardous materials are typically incinerated or recycled at permitted facilities.



**Reactive & Explosive Materials** - Reactive and explosive materials are identified and stabilized either onsite or at EPA approved facilities. Remtech has destroyed explosives at airports, closed health facilities, and remediated materials that are not handled by bomb squads. Unknowns during criminal investigations have been destroyed by controlled incineration/detonation systems designed by Remtech Engineers.

**Infectious & Medical Wastes** - Infectious/medical wastes are disposed of at EPA permitted facilities to ensure that biohazards are controlled and disposed of properly. Remtech has remediated medical facilities that have been closed, had uncontrolled releases, or system failures for private, city, county, state, and federal clients.

**Controlled & Clandestine Drug Lab Decon & Disposal** - Many controlled substances and clandestine drug lab materials and wastes are highly reactive and require special handling. Remtech has worked with law enforcement and public health authorities to mitigate appropriately.

**Labpacks** - Characterization & packaging of laboratory and medical facility chemicals. Remtech handles waste streams from research,

## POLLUTION PREVENTION PRODUCTS

Remtech manufactures pollution prevention and remediation products and systems designed by environmental engineers with over 40 years experience on over 6,000 site remediations since 1975. For more information on our environmental products, contact our website:  
[www.remtech-eng.com](http://www.remtech-eng.com)

- ☑ Pre-Cast Stormwater Oil Containment Weir Boxes with Automated Hydrocarbon Sensors and Sluice Gates
- ☑ Containment and Pollution Prevention Systems for Facilities, Tank Farms, and Contact Water Diversion
- ☑ Spill Response Kits
- ☑ Remediation Trailers, Sparge, Venting, Total Fluids Extraction, Biological & Physical/Chemical Treatment Systems
- ☑ Durable Magnetic Drain Stops for Curb Inlets and Oversize Grating Drop Inlets
- ☑ HC-2000 Biostimulation Accelerator and Surface Cleaner



Mercury Release at Medical Facility Remediated



Closed Hospital Chemicals, Biohazards & Radioactives Cleanup



Pre-Cast Oil Containment Weir Box, Hydrocarbon Sensor & Automated Sluice Gate



Bio-Sparge Trailer



HC-2000 Concentrate



Curb and Oversize Iron Grating Magnetic Drain Stops



Spill Kit with Hard & Sorbent Boom, Sorbent, and Disposal Drum



Total Fluids Extraction System



200 North Cobb Parkway, Suite 208, Marietta, Georgia 30062  
Phone: 770-427-7766 or 800-377-3648, website: [www.remtech-eng.com](http://www.remtech-eng.com)