



- ❖ **Emergency & Disaster Response**
- ❖ **Environmental Remediation**
- ❖ **Industrial Services & OSHA Safety Systems**
- ❖ **Pollution Prevention**
- ❖ **Waste, Landfill & Stormwater Management**
- ❖ **Renewable Energy Services**

WHO WE ARE & WHAT WE DO

Remtech was founded by **Mark D. Ryckman** in 1988. Mr. Ryckman possesses a BS in Civil Engineering and MS in Environmental Systems Engineering from Clemson University and a BA in Mathematics from DePauw University. He is a Registered Professional Engineer in six (6) states and a Board Certified Environmental Engineer in Water & Wastewater Treatment and Environmental Site Remediation conferred by the American Academy of Environmental Engineers & Scientists. He has served as project principal on over 10,000 projects



Mark D. Ryckman
Founder & CEO

Larry K. Seabolt, Jr., has served as Vice President of Remtech for over 30 years and possesses an engineering degree from Southern Tech in Civil & Environmental Engineering. He is a Certified Hazardous Materials Manager, and has chaired the Operations Committee of the GA DOT TIME (Traffic Incident Management Enhancement) and Cobb County Resource Council (LEPC). Mr. Seabolt has served as project manager on over 6,000 multi-media environmental projects



Larry K. Seabolt, Jr.
Vice President

REMTECH CAPABILITIES

Remtech Engineer's environmental systems approach to emergency response, remediation, and industrial services reduces the layering of firms, completion time, and project costs. Our over 40 years experience with extensive design, build, operation and "hands on" experience allows us to select "smart" sustainable, practical and reliable solutions.

- **Emergency Spill & Disaster Response**
- **Environmental Remediation, Abatement, & Treatment**
- **Industrial & Vacuum Truck Services**
- **OSHA Safety Systems**
- **Pollution Prevention**
- **Waste, Landfill & Stormwater Management**
- **Renewable Energy Services**
- **Environmental Consulting & Training**

Remtech would welcome the opportunity to earn the right to become a preferred vendor for your environmental and industrial service projects. Remtech is committed to completing each project in a professional, discrete, and cost-effective manner.

PROJECT SERVICE AREA

Remtech has completed over 10,000 projects in 23 States since 1975. Our corporate offices are located in Atlanta (Marietta), Georgia. Our primary service area is the southeast.

Other states include: Alabama, Arkansas, California, Florida, Georgia, Illinois, Indiana, Iowa, Kansas, Louisiana, Maryland, Michigan, Minnesota, Mississippi, Missouri, North Carolina, New Mexico, New York, Ohio, Pennsylvania, South Carolina, Tennessee, Virginia, and West Virginia.



Glacial Acetic Acid Explosion Response



Remtech Groundwater Treatment
System at Superfund Site



High Rail & Industrial Cleaning Services

EMERGENCY SPILL & DISASTER RESPONSE

Remtech's principals have completed projects involving hazardous materials, waste, reactivities, oils, chemicals, heavy metals, mercury, mold, asbestos, and biohazard releases for the chemical, manufacturing, institutional, hospital, energy, and transportation industries.

Remtech is a Coast Guard OSRO contractor and maintains an excellent safety record over the past 30 years.

- Oil & Hazardous Material Response
- Biohazard & Toxic Waste Cleanups
- Reactive & Explosive Material Mitigation
- Chemical Transfer & High Pressure Gas Transfers
- Intermodal Container Releases
- Chemical Fire & Plant Explosion Mitigation
- Train Derailments, Tractor-Trailer & Tanker Accidents
- Leaking Tank & Container Cleanup
- Inland Waterway & Marina Spill Cleanups
- Natural Disaster Response & Restoration

ENVIRONMENTAL REMEDIATION

Remtech's 35 years of design build experience places us in a unique position to provide integrated environmental remediation engineering design, construction, equipment manufacturing, and system operation, reducing the layering of firms and project life cycle costs.

Remtech's environmental remedial systems are designed to minimize operation and maintenance costs and provide "smart" sustainable solutions to complex environmental projects.

Remtech specializes in biological, physicochemical, and mechanical cleanup technologies including: enhanced biostimulation, thermal, and physiochemical treatment of soil, groundwater, contaminated facilities, and hazardous waste cleanups.

- Soil & Groundwater Remediation
- Superfund Site Cleanups
- Hazardous Waste & HSRA Cleanups
- Brownfields Restorations
- UST & AST Tank Cleanups & Closures
- Toxic & Biohazard Cleanups
- Landfill and Pond Closures & Capping
- Lead, Mercury, Asbestos & Mold Abatements
- Fire & Water Damage Restoration
- Facility Decontaminations
- Combustible Dust Abatement

BIOSTIMULATION WITH HC-2000

Native heterotrophic bacteria, fungi, and yeast are ubiquitous and the principal contaminant degraders in soil, water, groundwater & ballast. HC-2000 accelerates native heterotrophic bacteria, fungi, and yeast degraders. The degradation process is reduced from years to months.



Leaking Sulfuric Acid Tank Transfer



Emergency Response & Remediation at Leaking Fuel Line at Intermodal Yard



Arsenic Contaminated Foundry Site Remediated During Construction



Gasoline in Fractured Rock under \$16M Building Remediated During Construction



Combustible Dust Abatement

HC-2000 (HC2) is a Remtech proprietary biostimulation accelerator/biosurfactant that cleans, desorbs, reduces odors, and degrades fuels, oils, lubricants, and chlorinated and non-chlorinated solvents. It works on soil, ballast, gravel, groundwater, surface water, surfaces and other matrices.

HC2 provides limiting degradation factors - organic nitrogen, enzymes, nutrients, catalysts, biosurfactants, electron donors, and external carbon sources, and works under aerobic, anaerobic, fermentation, and methanogenic conditions.

HC2 has been used successfully on over 500 sites during the past 25 years and is approved by Georgia & Florida for soil and groundwater cleanups. Other states and regulatory authorities typically rapidly approve HC2 on a case-by-case basis.

INDUSTRIAL SERVICES

Remtech offers a complete array of industrial facility, tank, process, and pipeline cleaning, inspection, repair, upgrades, maintenance, testing, and construction services.

System upgrades are designed/constructed to prevent system failures and increase productivity. Our experience with installing reliable and low maintenance systems ensures that repairs are sustainable and upgrades are *operator friendly*.

- Sewers, Catch Basins, Manholes
- Process Lines & Pipelines
- Tanks, Tankers, Railcars
- Buildings, Ducts, Dust, Bag-houses & Silos
- Lift Stations & Oil/Water Separators
- Stormwater Retention Facilities, Ponds, Pits & Lagoons
- Process Unit Operations, Pumps & Controls
- Wastewater Treatment Systems
- Railyard Track Cleaning and Track Mat Installation
- Product Removal/Changeout from Tanks, Silos, Vaults, Pipes
- Repairs of Internal Mechanical and Electrical Systems
- Equipment Decommissioning
- High Vacuum Removal of Solids, Slurries, and Liquids
- High Pressure Water/Steam Blasting and Jetting

POLLUTION PREVENTION & CONSTRUCTION

Vulnerable operational and system failure elements are identified and failsafe solutions are incorporated into the operation, design, and construction of pollution prevention systems. This maximizes system reliability and reduces life cycle maintenance costs.

- Secondary Containment for ASTs and Pipelines
- Leak Detection and Control Systems
- Stormwater & Spill Prevention Systems
- Soil & Groundwater Treatment Systems
- Process Spill & Loss Prevention Systems
- Water & Wastewater Treatment Systems
- Railcar/Tanker Loading & Unloading Systems
- Storm, Process, & Wastewater Sewer Installation
- Oil/Water Separators



HC2 JP8 Stream Bank 4 Month Biostimulation System



HC2 Gasoline Wetland 5 Month Biostimulation System



Fuel Conditioning System Installation



Tank & Heating Coil Cleaning



Leaking Sulfuric Acid Tank Cleaning

VACUUM TRUCK SERVICES

Remtech offers vacuum truck services (with Hi Rail capabilities) for environmental cleanups; emergency response to spills and derailments; and for geotechnical applications including potholing/daylighting, and non-destructive location and uncovering of utilities, pipelines and underground structures.

Remtech has developed a new sewer cleaning vacuum/jetting system called **VacuJet** that removes heavy solids from long sections of sewers not achievable by conventional jetting.

- Granular, Powdered Material, Dust Cleanups & Transfers
- Sludge & Slurry Cleanups
- Confined Space Cleaning
- Tank, Tanker, Railcar Cleaning & Transfers
- Railroad Ballast, Track & Switch Cleaning
- Building & Storage Facility Cleaning (Silos, Elevators, Bag-houses)
- Pipeline & Pipeline Interface Cleaning
- Sewer Cleaning (Storm, Sanitary, Catch Basin, Manholes)
- Landfill Leachate Recovery
- Pit, Lagoon, Clarifier, Sump, Digester Clean-outs
- Oil/Water Separator Clean-outs
- Total Fluids Extraction
- Potholing/Daylighting/Hydro Excavation of Underground Utilities

OSHA SAFETY SYSTEMS

Remtech's safety equipment meets *OSHA Industry Fall Protection Standard 29 CFR 1910, OSHA 1910.23* which includes intermediate railing, stair railing, pipe railing, handrail load and engineering specifications, catwalk specification, etc., and API compliant platforms with stairs to access a variety of heights and lengths.

- Tank/Railcar Loading/Unloading Racks
- Loading & Unloading Fall Protection
- Step & Grating Tank Farm Systems
- Stormwater Facility Access Roads & Steps

WASTE MANAGEMENT

Let Remtech manage your waste streams from cradle-to-grave. Each waste stream is classified and screened for waste minimization, reuse/recycling, treatment or disposal to minimize your liabilities and costs. Remtech handles hazardous, special, universal, infectious & medical, and labpacks.

LANDFILL MANAGEMENT

Remtech has over 40 years experience in waste management, solid waste management, landfill maintenance, leachate treatment, leachate collection, pump repairs, and vacuum and high pressure jet cleaning of leachate collection systems, detention ponds, and sewers.

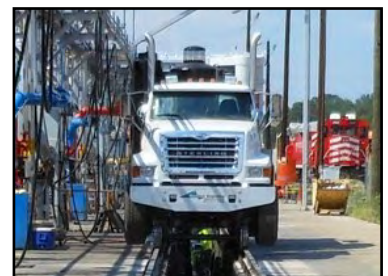
- Leachate Treatment System Design/Build
- Leachate Sump & Collection System Cleaning
- Gas Collection System Maintenance and Cleaning
- Gas Monitoring



Dual Hi-Rail Vac Truck Coal Cleanup



Contaminated Gravel Removal



Hi-Rail Cleaning of Railyard Sand Pits



Tanker Loading Fall Protection



Ethanol Unloading Rack with Secondary Containment

WASTEWATER & GROUNDWATER TREATMENT

Remtech has developed proprietary temporary modular wastewater treatment systems consisting of aeration, mixing, equalization, clarification, sedimentation, and tertiary treatment unit operations for bypass wastewater treatment during plant cleaning, repairs or upgrades.

Remtech's **FRACAIR** aeration/equalization system fits inside a standard 21,000 gallon frac tank or other steel tanks that offers a cost-effective temporary treatment system. Air manifolds and diffusers are inserted through 20" manholes with quick connects that are held in place by magnets. Magnetic anchoring eliminates permanent alterations of RENTAL tanks.

- Multi-Phase Groundwater Extraction
- Landfill Leachate Treatment, Cleaning & Maintenance
- Mobile Temporary Bypass Wastewater Treatment
- FracAir Magnetic Aeration for Frac and Steel Tanks

STORMWATER FACILITY MANAGEMENT

The goal of stormwater management is to minimize negative impacts of stormwater, erosion, and pollution loadings associated with municipal and industrial developments on site and downstream receptors.

Stormwater facilities are required to be inspected and maintained to ensure structural integrity, effluent quality, prevent excessive ponding, undesirable vegetation, erosion and sediment deposition, ground stability, clogging of inlet or outlet structures, and deterioration of pipes.

Remtech's professional engineers and Level II Certified Design Professionals have over 30 years experience in erosion control and stormwater facility management, inspection, maintenance, design and construction of ponds, detention basins, detention vaults, and cisterns.

- Annual Certified Inspections
- Erosion Control, Repairs, Maintenance & Cleaning
- Design & Construction
- Automated Outfalls
- Vegetation Maintenance & Controls
- Access Roads & Steps
- Underwater Drone Detention Vault Inspections

RENEWABLE ENERGY SERVICES

Remtech has served as the "engineer of record" for a landfill gas to renewable gas project, conducted due diligence investigations on dairy manure to natural gas projects, and conducted methane production tests on a dairy manure projects. Remtech principals completed one of the first successful pilot waste-to-energy demonstration projects in the early 1980's approved by EPA by delisting a refinery hazardous waste sludge pilot test to power multi hearth sludge furnaces at a major midwestern domestic wastewater treatment plant for 5 years.

- Renewable Energy Due Diligence Evaluations
- Waste Characterization & Methane Production Testing
- Biomass to Renewable Energy Design
- Renewable Energy System Operation & Maintenance



Loading Rack with Secondary Containment & Gantry Access



Stormwater Vault Containment, Automated Gate & Hydrocarbon Sensor



Landfill Leachate Treatment System



Mobile WWTP Treatment System



Dairy Manure RNG Due Diligence

ENVIRONMENTAL ENGINEERING CONSULTING

Remtech specializes in: environment property, asbestos, mold, mercury, indoor pollution, and stormwater investigations; monitoring, prevention, response plans, root cause investigations, and regulatory compliance audits.

Environmental Assessments

- ASTM Phase I, II, & III Assessments
- Industrial Hygiene & Indoor Pollution Assessments
- Asbestos, Mold, Lead & Heavy Metals Assessments
- Risk Based Site Closures
- Hydrology & Stormwater Investigations & Monitoring
- CCTV Sewer Video Inspections
- Underground Utility and Underground Structure Location - Ground Penetrating Radar, Liquid Smoke Testing, Conductive Tracing
- Root Cause Accident & System Failure Investigations
- Regulatory Compliance Audits

Prevention, Response Plans & Expert Witness

- Spill & Stormwater Pollution Prevention Plans
- Spill Deployment Plans with Digital GPS Mapping
- Facility Response Plans
- Erosion Control Plans
- Root Cause & Forensic Investigations
- Accident Reconstruction
- Expert Testimony
- Stormwater Facility Inspections & Remediation

HEALTH & SAFETY TRAINING

Remtech offers health & safety training that meets OSHA, EPA, DOT, RCRA, and other regulatory requirements. Classes may be conducted online or at Remtech or your facility. Visit our website www.remtech-eng.com for more information.

EPA, DOT, OSHA & OTHER Courses

- RCRA Initial and Advanced Training
- Hazmat Transportation Safety
- Transportation Safety Refresher
- Advanced HazMat Transportation Safety
- Hazwoper Hazardous Waste & Emergency Response
- First Responder Operations & Technician
- Incident Command
- 8-hour Refreshers
- Process Safety Management Training
- Stormwater Pollution Prevention Training
- Spill Response Equipment Deployment Training

For more information on Remtech's Services and Products
visit our website - www.remtech-eng.com



100-Acre Chemical Plant
Assessment & Remediation



Gaging Free Product in
Two Phase Extraction Well



Digital GPS Spill Deployment Plan for
27,000-acre Power Plant Watershed



Anhydrous NH₃ Training at Coal Fired
Power Plant for NO_x Removal



Midland Kit Training at Power Plant



200 North Cobb Parkway, Suite 208, Marietta, Georgia 30062
Phone: 770-427-7766 or 800-377-3648, website: www.remtech-eng.com